

Bakers Oven - Technical Specifications

(These instructions must be used in conjunction with the "Installation Instructions" for Bakers Oven)

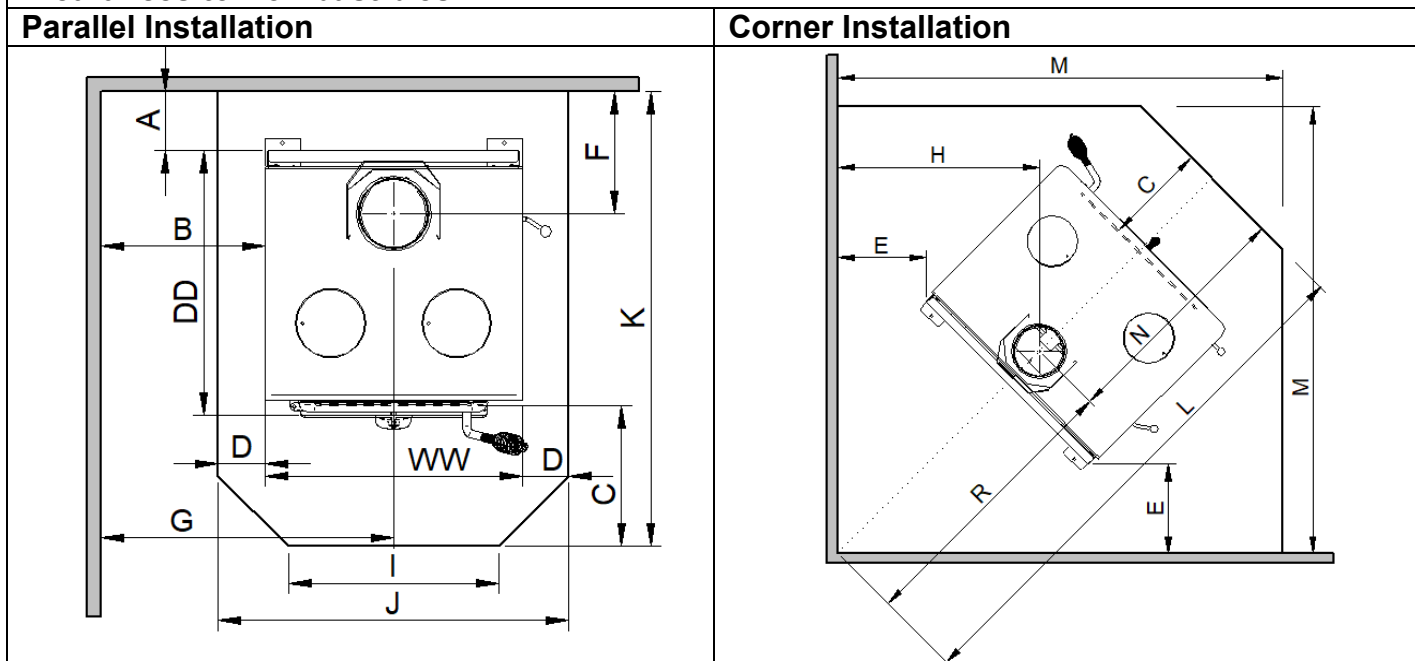
Nectre Bakers Oven model have been tested & complies to New Zealand National Environmental Safety Test Standard - AS/NZS 2918:2001

Overall Dimensions	550mm Wide x 572 mm Deep x 825mm High
Weight	170 kg

Bakers Oven is a cooking appliance. Consult your local council for clarification on rules appertaining to the installation of wood-fired cooking appliances.

Approx. Heating Capacity	Small to Medium Homes (2-3 bedrooms)
Flue Shield	900mm Long 180° arc or 900mm long Masport Stainless Steel Double Flue Shield
Flue System	Standard 4.2M Long, 150mm Masport Flue System with a dropbox or flue system with a dropbox that has been tested and comply with AS/NZS 2918:2001, Appendix F.
Floor Protector Requirement	Minimum 12mm thick Floor Protector made of <ul style="list-style-type: none"> - 12mm non-combustible fiber cement board or - Combination of 6mm tile underlay & 8mm tiles

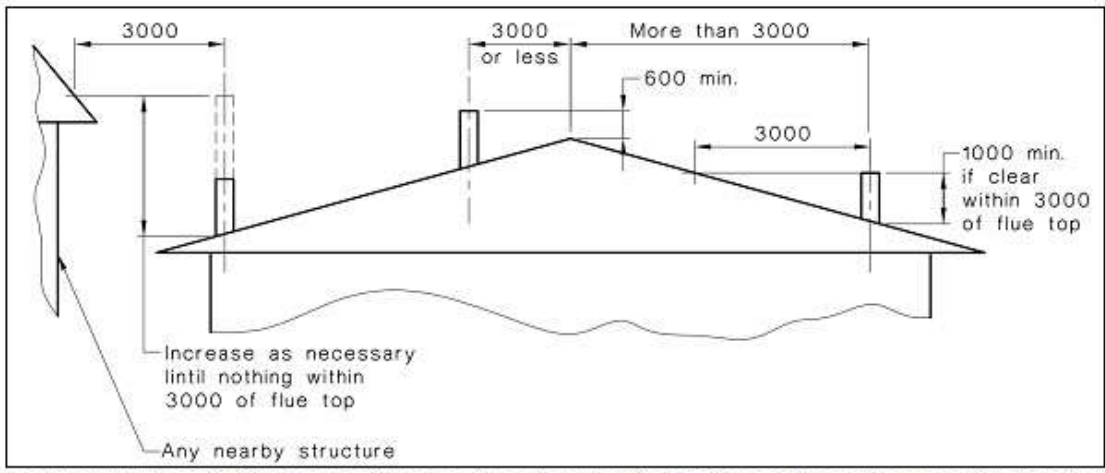
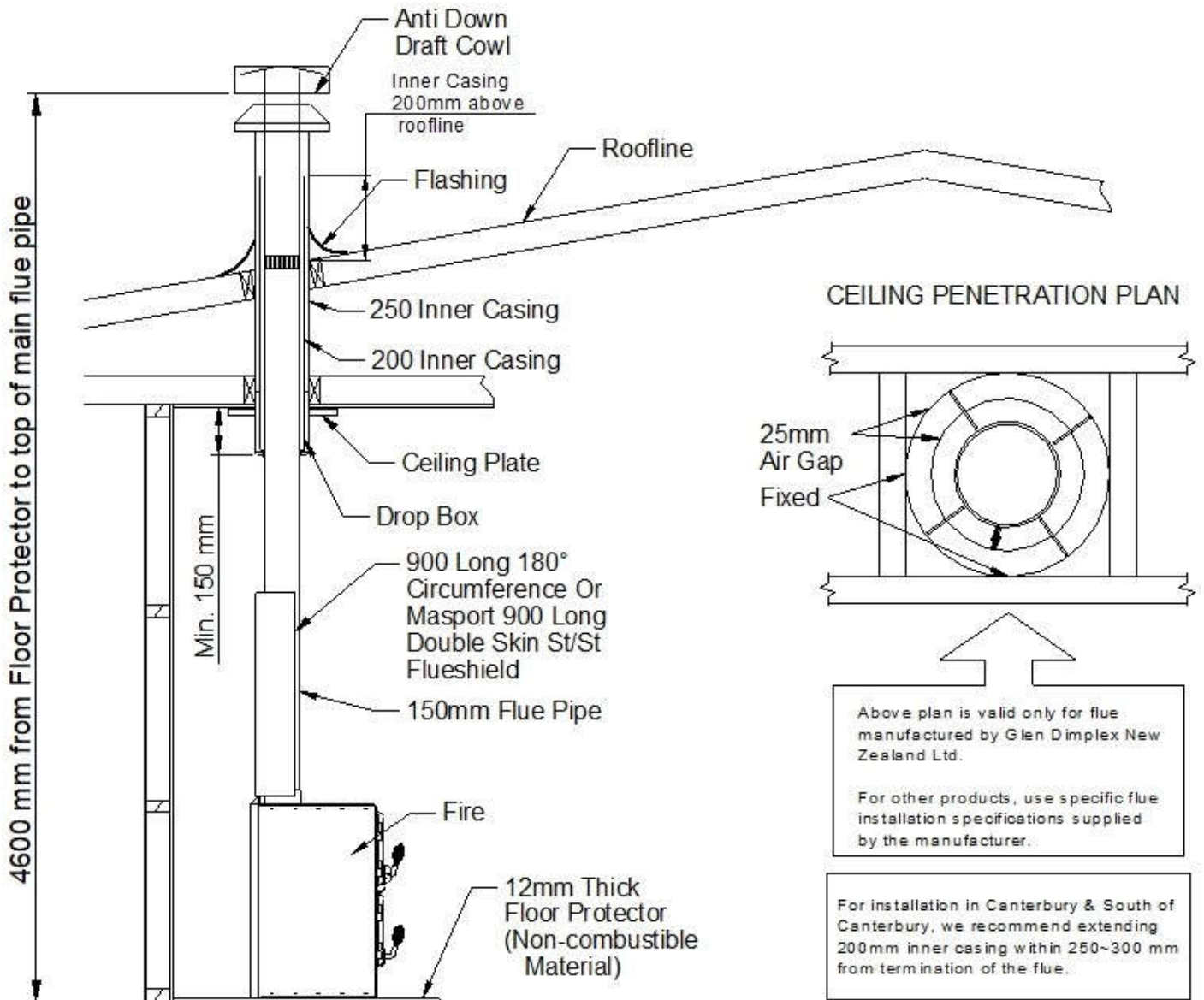
Clearances to Combustibles



A- Rear Panel to Rear Wall	125 mm	C- Glass to Floor Protector Front	300 mm
B- Cooktop Edge to Side Wall	350 mm	E- Cooktop Corner to Wall	350 mm
C- Glass to Floor Protector Front	300 mm	H- Flue Centre to Wall	640 mm
D- Floor Protector Side	100 mm	L- Floor Protector Diagonal	1618 mm
F- Flue Centre to Rear Wall	260 mm	M- Floor Protector Side	1303 mm
G- Flue Centre to Side Wall	625 mm	N- Flue Centre to Floor Protector Front	713 mm
I- Floor Protector Front Edge	450 mm	R- Flue Centre to Wall Corner	905 mm
J- Floor Protector Width	750 mm	WW- Overall Width of Fire	550 mm
K- Floor Protector Depth	973 mm	DD- Overall Depth of Fire	572 mm
		HH- Overall Height of Fire	825 mm

Seismic Restraint - In New Zealand, it is required that the wood burner and floor protector are secured to prevent shifting in the event of an earthquake. This is best done by fastening the wood burner right through the protector to the floor, using 8mm DynaBolts or 8mm coach screws or equivalent toggle fasteners for wooden floors of appropriate lengths. Seismic holes are at the rear of the burner.

Standard 4.2m Long, 150mm Masport Flue System with Dropbox
 The Masport flue system has been tested and complies to AS/NZS 2918:2001 Appendix F.



If a flue exits out of the roof within 3 meters from the ridge, the outer shield height shall be not less than 600mm above the ridge. If the flue exits further than 3 meters out from the roof ridge then it must project at least 1000mm above roof penetration. This dimension may need increased to ensure that the top of the flue is at least 3 meters away from the roof or other obstructions when measured horizontally.

The flue pipe shall extend not less than 4.6m above the top of the floor protector. Due to factors such as roof pitch, predominant winds, nearby obstructions (ie. trees, buildings), and fire placement, flue lengths and hats/cowls may vary.