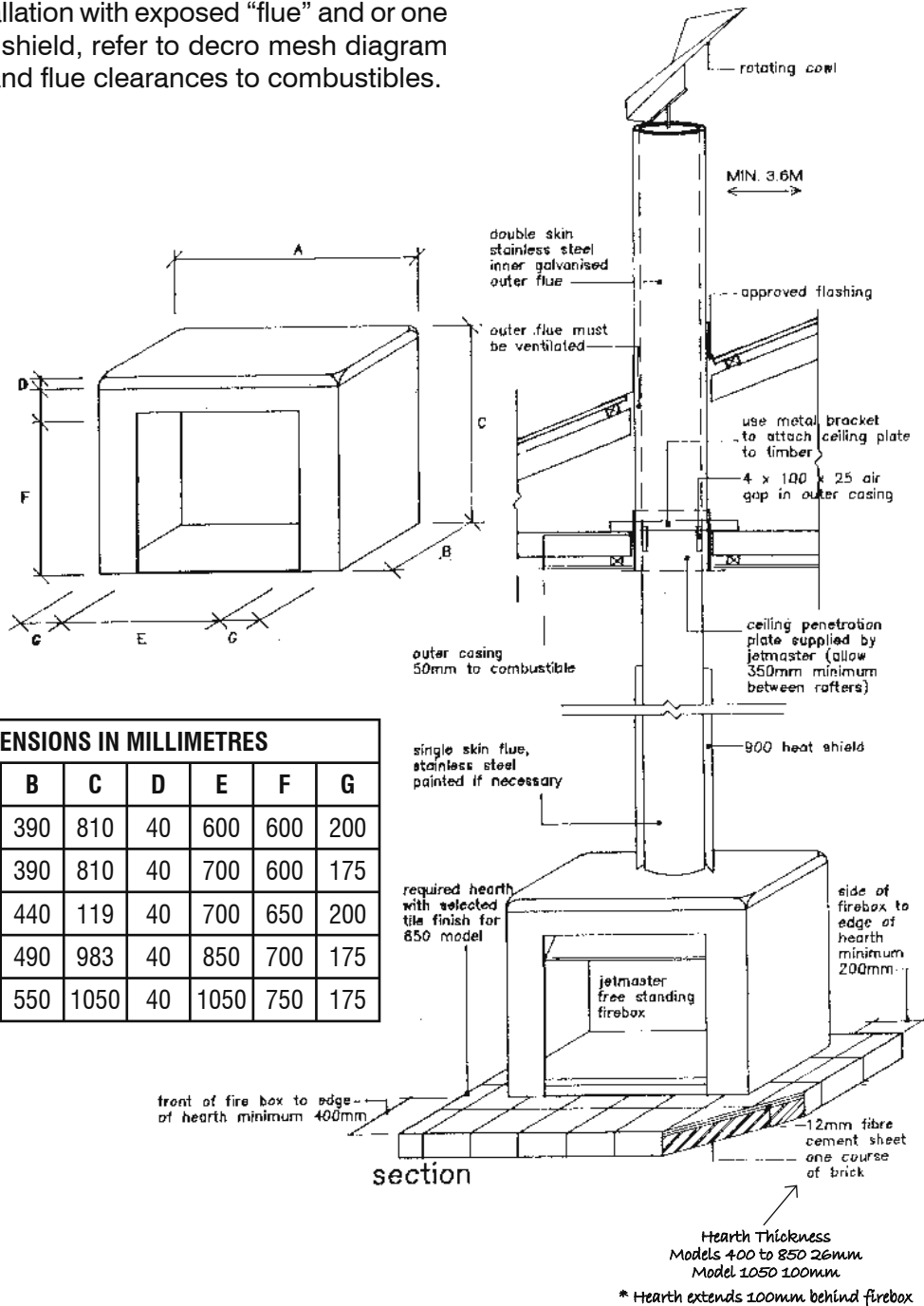


# JETMASTER FREE STANDING METAL CASING "A"

Typical installation with exposed "flue" and or one length heat shield, refer to decro mesh diagram for firebox and flue clearances to combustibles.



# JETMASTER FREE STANDING METAL CASING "B"

**Typical installation with deco mesh heat shield to ceiling.**

<b>FIREBOX AND FLUE CLEARANCES TO COMBUSTIBLES</b>			
<b>Jetmaster 600, 700S, 700D &amp; 850 Freestanding</b>			
	A	B	C
Flue Pipe	250	175	50
Flue Pipe with 900 Heat Shield	100	175	50
Flue Pipe with Decro Mesh	100	175	50

NOTE: min. 400mm from front of firebox to edge of hearth

