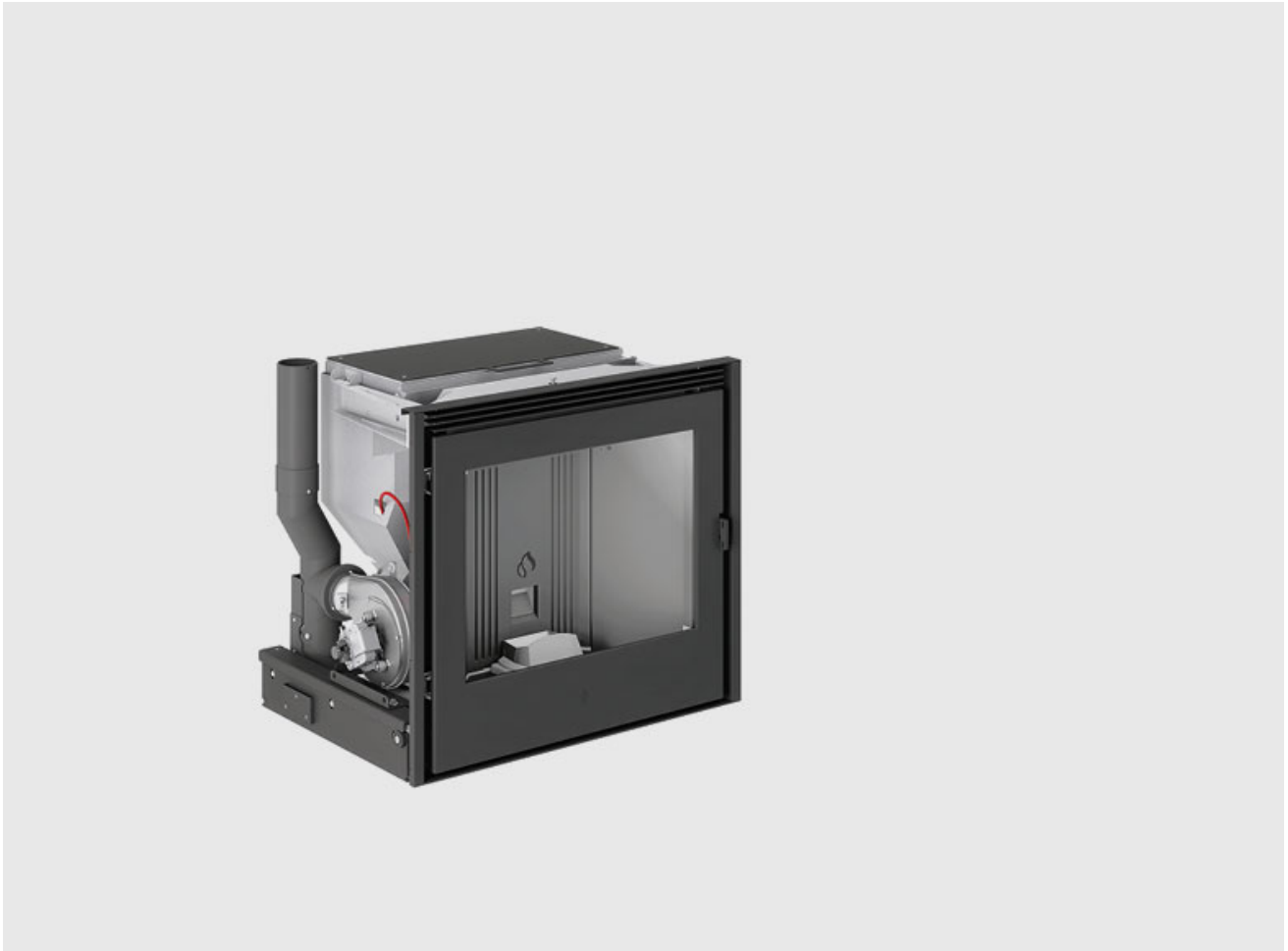


IP 9 CAST IRON DOOR

An IP pellet-burning insert that allows you to turn your traditional open fireplace into a practical, closed one, ensuring all the pleasure of fire. Programmable automatic switching on/off characterises this pellet-burning insert: ideal also for first-time installations.

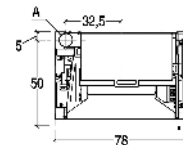
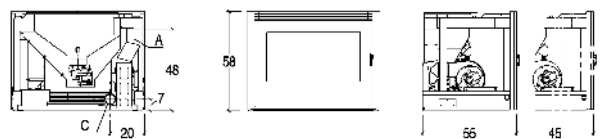


GENERAL FEATURES

- Heating:
- Structure: coated steel with closed firebox, that can be removed on sliding runners
- Firebox: cast iron
- Brazier: steel
- Opening: cast iron door with gasket on metal sheath, with self-cleaning ceramic glass, resistant to 750°C
- Handle: concealed detachable handle
- Function control: display that can be wall-mounted
- Timer-controlled thermostat with programming: as standard feature with daily, weekly and week-end programming modes with two time frames
- Fuel: pellets

TECHNICAL DETAILS

- Energy efficiency class A+
- Weight kg 140
- Standard flue outlet Ø cm 8
- Model IP 9



A	C
B cm	6 cm